

Resourced solutions

Consultancy

Our specialist resources address a range of areas including:

Operations, IT and Business
Management
Project Management
Systems Integration and testing

Independent research

We independently research the operational issues facing our clients. These include Operational Risk issues such as Business Continuity Management, Sarbanes Oxley, Basle II, MiFID, and Cost Management.

From this research and our own experience we develop Operational and Project health checks that provide a deeper level of qualified independence to the cause and effect analysis enhances our clients ability to succeed.

Training

Through our consulting and training we aim to help clients understand their own strengths and weaknesses and then consider appropriate ways to build on their strengths and reduce their weaknesses.

Our modular, one and two day courses have been designed to be flexible and allow delegates to apply structured methods to their own specific situations. On returning to their workplace they are ready to apply practical techniques and examples learnt.

Our approach

Results

To achieve the most effective results, we have channelled our experience into a set of practical methods and corresponding training courses. We believe that by using these approaches on our assignments we are able to address the key issues, in a structured manner, ensuring repeatable best practice is used to deliver the results expected .

Multi-disciplined

The core capability of JPSA is to provide effective and trusted resource and advice to our clients. To achieve this we provide a variety of business focussed, clear thinking people to address the management, analysis, development, testing and implementation activities in a wide range of disciplines.

Health Checks

To ensure a clear understanding of a requirement by all parties we encourage clients to undertake one of our health checks, developed to ensure the right scope and real issues are being addressed from the outset.

An introduction to JPSA Consulting

➤➤ Solutions to meet business requirements



JPSA Consulting Ltd,
Bridge House,
Tudeley,
Tonbridge,
Kent,
TN11 0PH.

Phone: + 44 (0) 1732 369490
Fax: + 44 (0) 1732 369490
E-mail: services@jpsa.co.uk

Website: www.jpsa.co.uk



Setting the standard for Management Consultancy

Tel: +44 (0) 1732 369490

Introduction

An introduction to JPSA Consulting

JPSA is a Management Consultancy established since 1993, with a background of IT and Operations management in a wide range of market sectors including:

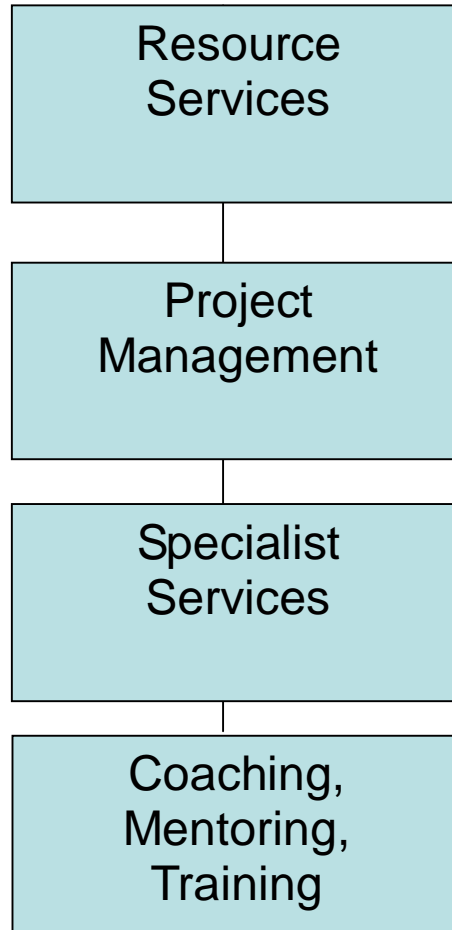
*investment and retail banking
insurance
telecommunications
television
logistics
utilities
government*

JPSA is now based around a large group of experienced people with an average of over 15 years practical involvement in their fields.

In addition to this base we are also supported by a selection of chosen partnership organisations that enable us to, cost effectively and efficiently meet a wide range of client's requirements.

With this experience available our aim is to apply best practice and advice to each assignment and ensure our skills are transferred wherever possible.

Service



Delivery

Account management

Our approach to account management is a key part to our success, our assignments and the relationships we maintain. By building trust and a real understanding of the unique issues facing each organisation we deliver strong and relevant solutions. We invest our time to ensure success.

Extended partner network

We are able to provide a complete solution to many client requirements through carefully chosen providers of complimentary services and software based on real experience and delivery. The JPSA network is one you can trust.

Our goal is to help clients meet their demands with the help of our experts, our research and the support of our highly experienced team.



Setting the standard for
Management Consultancy

JPSA Consulting Ltd,
Bridge House,
Tudeley,
Tonbridge,
Kent,
TN11 0PH.

Phone: + 44 (0) 1732 369490
Fax: + 44 (0) 1732 369490
E-mail: services@jpsa.co.uk

Website: www.jpsa.co.uk